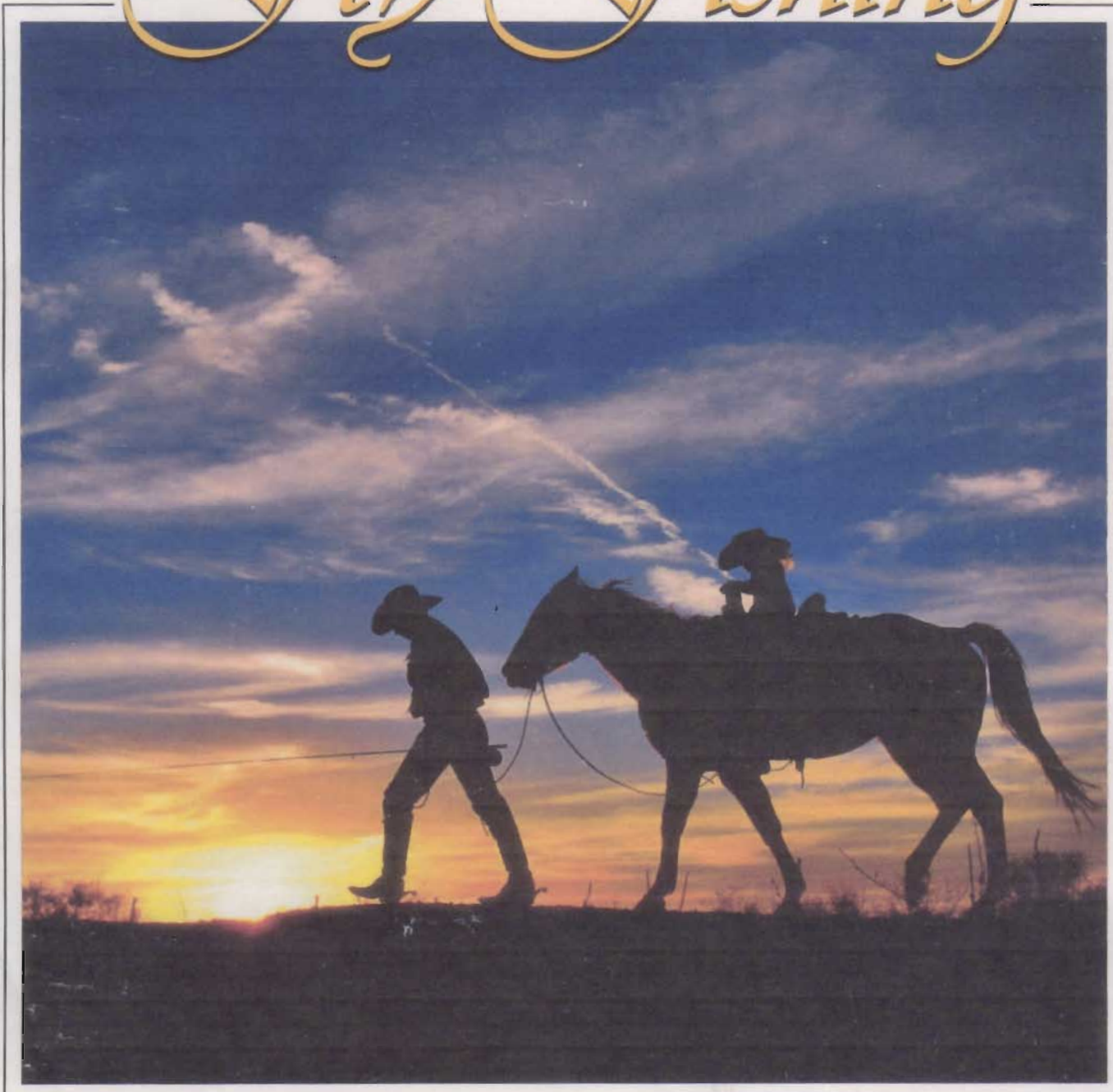


SOUTHWEST

September/October 2007

\$6.95US • \$8.95CAN

Fly Fishing



Mogollon Rim, AZ • 26

Lake Amistad, TX • 30

Uintah and Ouray

Indian Reservation, UT • 38

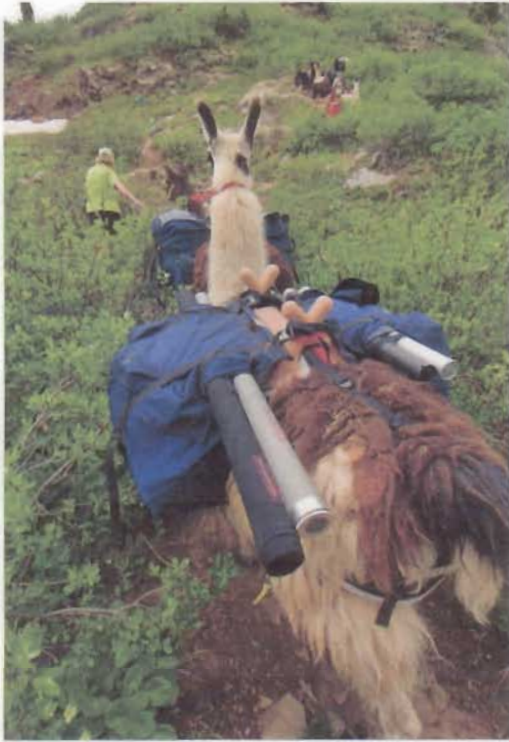
Hot Creek, CA • 44



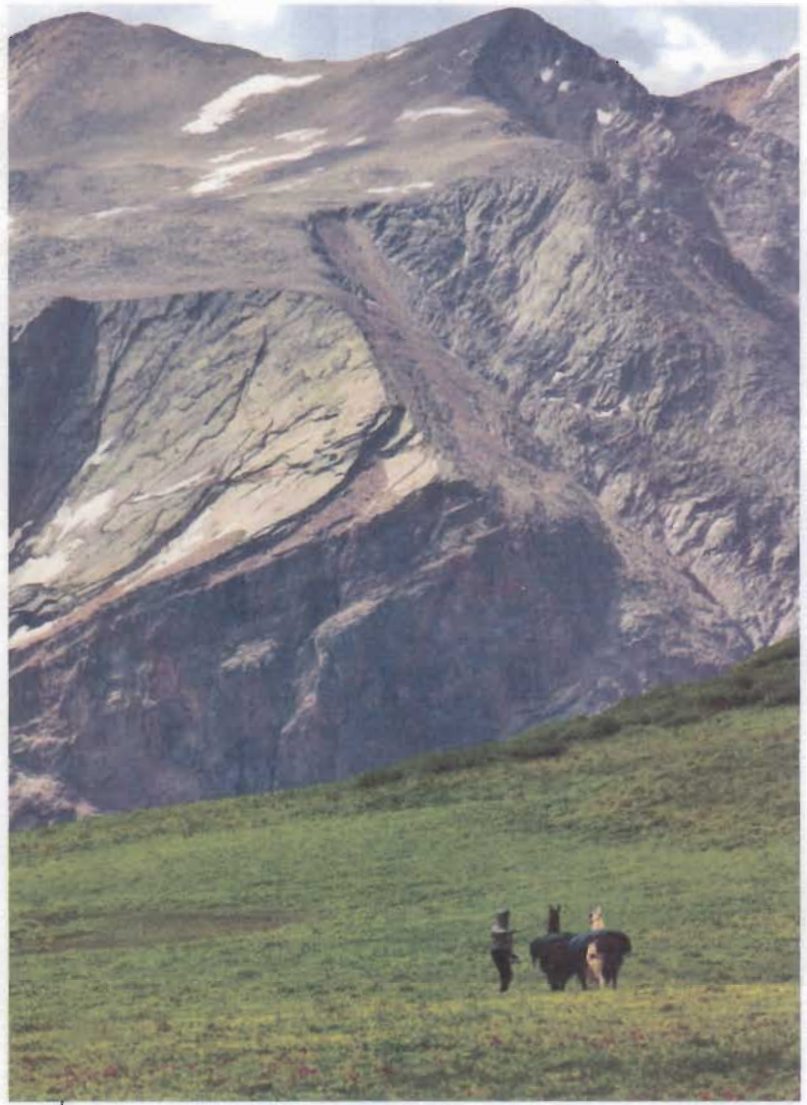
Exposure

Llama Trekking for Trout

By Mark Lance



Packing into the backcountry with llamas takes a load off the shoulders and leaves more time for fishing.



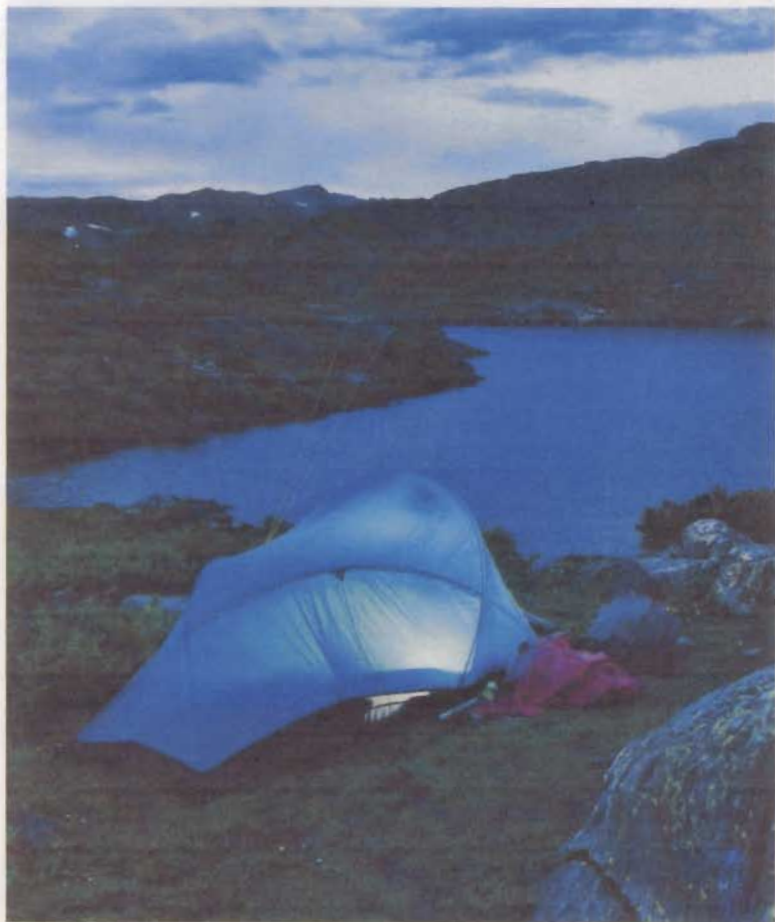
Colorado's Grenadier Range is an imposing backdrop to llama trekkers and anglers.



Once in a while, a high mountain lake will give up a big surprise. Sharon Lance admires a colorful cutthroat trout.



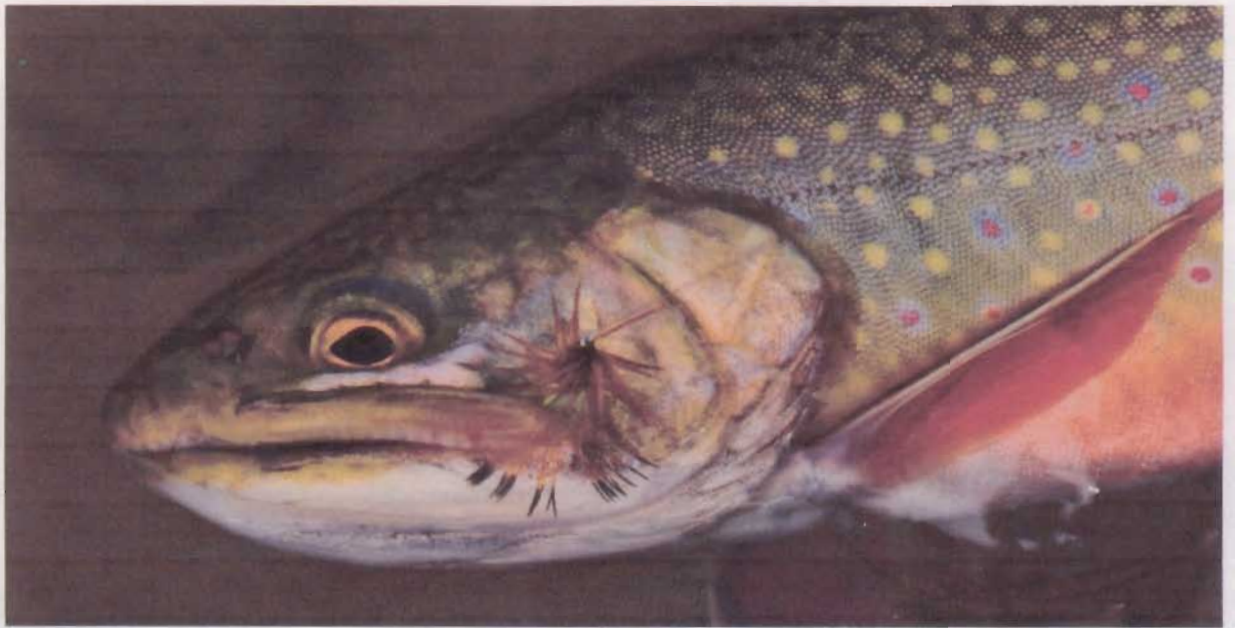
Reflections on a timberline lake deep in the Weminuche Wilderness



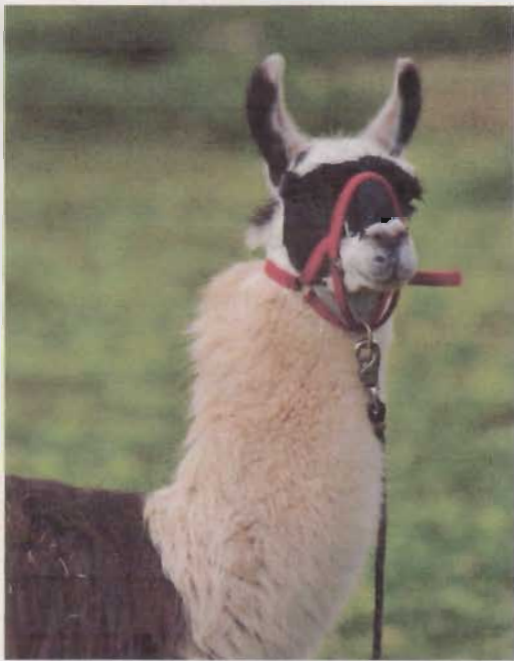
Nightfall at timberline



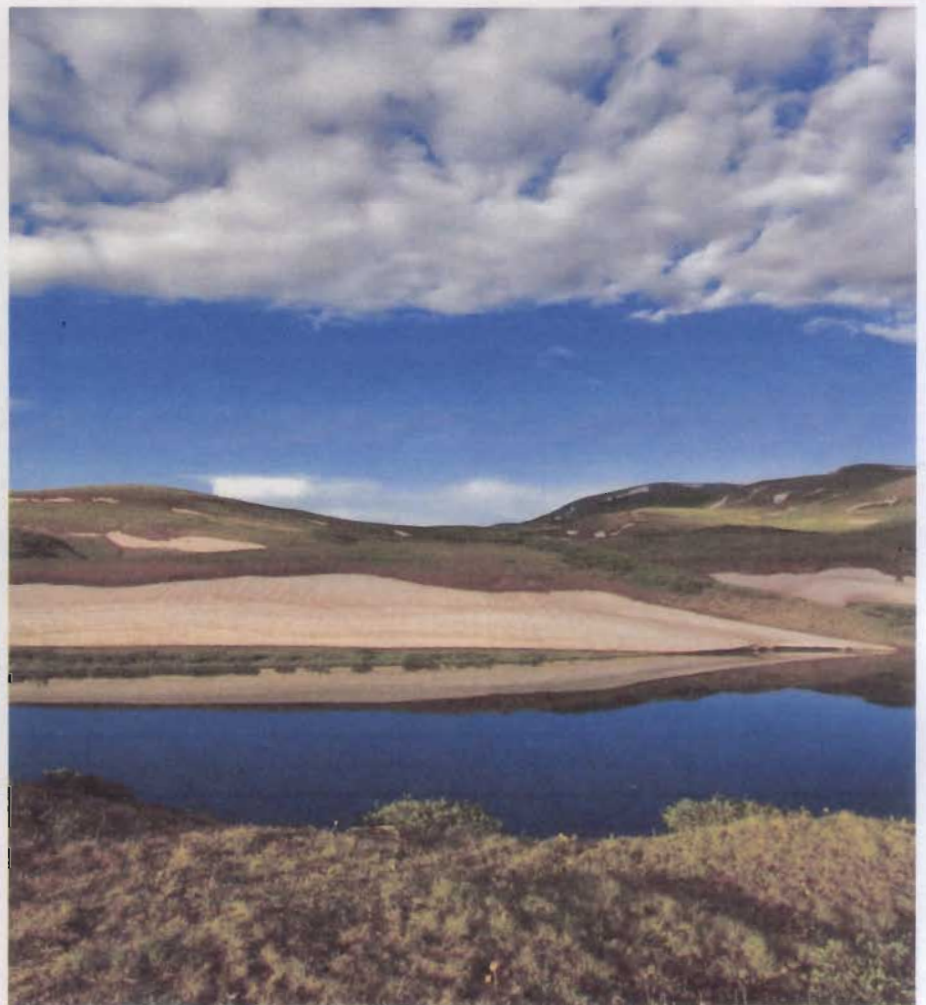
Mid-summer flowers brighten the rocky landscape.



Alpine brookies are usually not picky. This one fell for a favorite pattern, the Lime Trude.



The ever alert llama is an excellent backcountry companion. Llamas are low impact on the environment and carry gear over rugged terrain.



High in the Weminuche Wilderness, snow banks linger well past the 4th of July.



Threatening clouds brew as an angler makes preparations to pursue cruising trout.



In Colorado's San Juan Mountains, all trails lead to trout.

Mark Lance is a freelance photographer who lives in Centennial, Colorado. www.riverlightimages.com



Sunset over Highland Mary Lake